

# \$450,000 - 20 Milburn Rd, S. Setauket

MLS #3134535

---

## \$450,000

4 Bedroom, 2.00 Bathroom, 2,200 sqft  
Residential on 1 Acres

N/A, S. Setauket, NY

Meticulously kept Hi Ranch Approx 2200 Sq ft in 3 Village School District Located on private .50 Acre gardeners retreat. Open floor plan, oak floors, cathedral ceilings, eat in kitchen w/lots of cabinet & granite counter space, Built in pantry and skylight. Over sized master bdrm, Summer kit, gas heat & CAC, Andersen full view windows. Brick paved patio, slate stairs leading to zen garden. Beautifully landscaped grounds, entertainers dream. Just move right in and unpack!!! Low Taxes!



Built in 1973

## Essential Information

MLS #	3134535
Price	\$450,000
Bedrooms	4
Bathrooms	2.00
Full Baths	2
Square Footage	2,200
Acres	0.56
Year Built	1973
Type	Residential
Sub-Type	Det
Style	Hi Ranch
Status	Closed
Taxes	\$10,876

## Community Information

Address 20 Milburn Rd

Subdivision N/A  
City S. Setauket  
County Suffolk  
State NY  
Zip Code 11720

### Amenities

Garages Att

### Interior

Heating Hw

### Exterior

Lot Description .56  
Construction Frame

### School Information

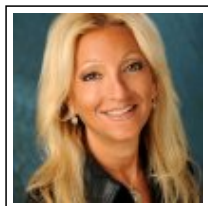
District Three Village

### Additional Information

Date Listed June 3rd, 2019  
Days on Market 86

### Listing Details

Listing Information Provided Courtesy of: RE/MAX Eastern Properties



**Agent Name** Lisa Seidner  
**Designation** Real Estate Salesperson  
**Office Phone** 516.484.1800  
**Cell Phone** 917.282.4998  
**Email** lisaseidner@danielgale.com



The source of the displayed data is either the property owner or public record provided by non-governmental third parties. It is believed to be reliable but not guaranteed. This information is provided exclusively for consumers' personal, non-commercial use.

Information Copyright 2020, Multiple Listing Service of Long Island, Inc. All Rights Reserved.